



PRACTICE AID

LUNGeVity Foundation: Lung Cancer Resource Compendium

Full abbreviations, accreditation, and disclosure information available at [PeerView.com/YEN40](https://www.peerview.com/YEN40)

PeerView
Oncology



Through research, advocacy, and community, LUNGeVity is transforming what it means to be diagnosed and live with lung cancer



LUNGeVity educational materials order form for providers:

www.lungevity.org/order-materials

The following pages include information for patients with lung cancer for use as a printable resource



[**lungevity.org**](https://www.lungevity.org)

LUNGevity Foundation: Lung Cancer Resource Compendium

A lung cancer diagnosis can be overwhelming. However, many treatments are available. Currently, approximately 50% of people with adenocarcinoma (a type of NSCLC) have a biomarker that has a corresponding targeted therapy.



Knowing your biomarker status may allow you to access treatment that can be very effective for your specific NSCLC

Patient's Bill of Rights

<https://lungevity.org/sites/default/files/nom/NOM-Patients-Bill-of-Rights-041421.pdf>

Biomarker Conversation Starter

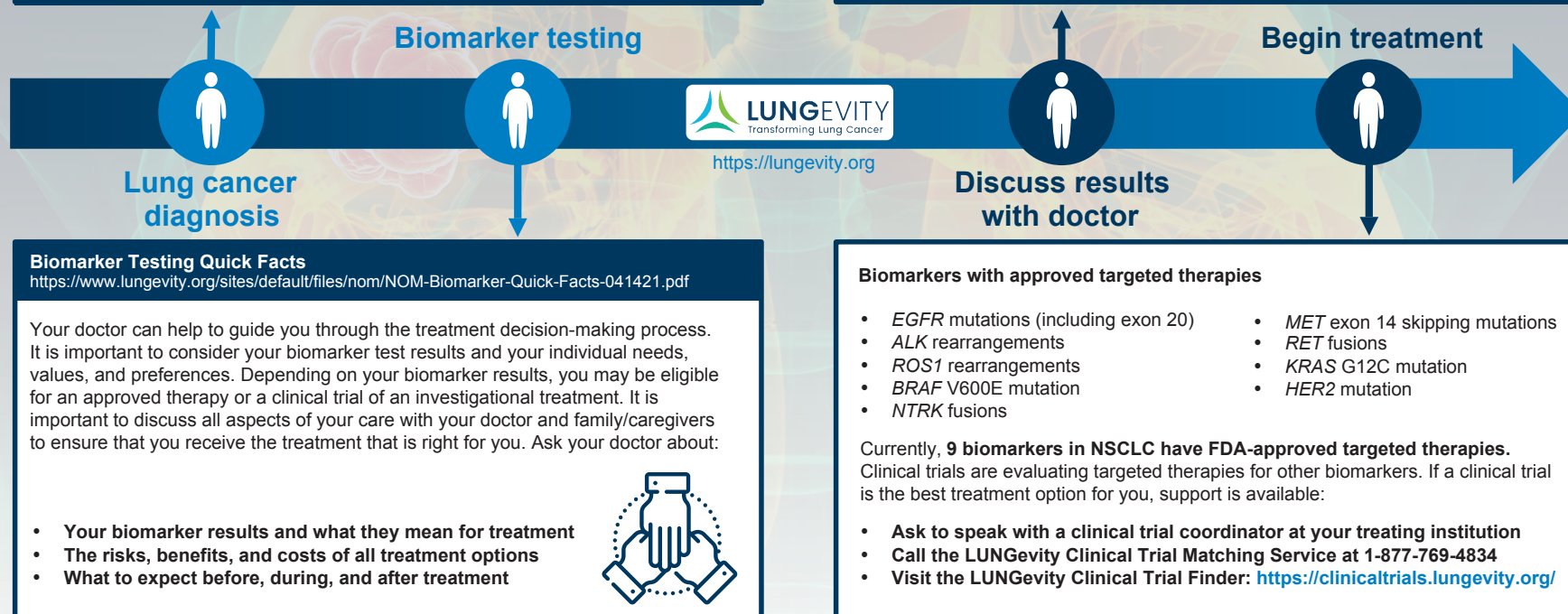
<https://lungevity.org/sites/default/files/biomarker/biomarker-conversation-starter-052020.pdf>

Comprehensive biomarker testing uses an advanced type of diagnostic test that analyzes a small piece of your tumor tissue to determine your biomarker status



It's important to wait for biomarker testing results whenever possible before starting therapy. It can take 4 weeks or longer to get these results, but your healthcare team can't make the best treatment plan without having this information.

- Learn more about biomarker testing: <https://lungevity.org/noonemissed>
- LUNGevity's LifeLine Support Partners connects you with someone who has been in your shoes: <https://www.lungevity.org/for-patients-caregivers/support-services>



LUNGevity is a national patient advocacy organization dedicated to supporting all lung cancer patients. Contact the LUNGevity helpline at 844-360-5864 or visit www.lungevity.org. If you have a targetable biomarker, LUNGevity can direct you to patient groups dedicated to supporting people with these biomarkers. Remember, you are not alone!

LUNgevity provides various one-page resources on biomarker testing for clinicians and patients

Resources for patients

Why Should I Talk to My Doctor About Comprehensive Biomarker Testing?

<https://lungevity.org/sites/default/files/biomarker/biomarker-flyer-052020.pdf>

Biomarker Conversation Starter

<https://lungevity.org/sites/default/files/biomarker/biomarker-conversation-starter-052020.pdf>

Resources for healthcare professionals to review with their patients

Navigating Lung Cancer: What's Next?

<https://lungevity.org/sites/default/files/request-materials/patient-journey-012017.pdf>

Biomarker Testing for NSCLC Patients

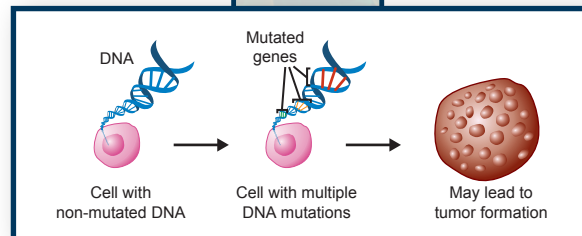
<https://lungevity.org/sites/default/files/biomarker/biomarker-testing-advice-from-HCPs.pdf>

There are comprehensive educational booklets on biomarker testing and targeted therapy from LUNgevity <https://lungevity.org/booklets>



Questions to ask your healthcare team about biomarker testing

- What is a biomarker?
- What is biomarker testing?
- What types of biomarkers are used?
- Is biomarker testing appropriate for you?
- For which biomarkers should you be tested?
- How is biomarker testing performed?
- Will you need multiple biopsies?
- What do the results of your biomarker tests mean?
- How does biomarker testing help you enroll in clinical trials?



Questions to ask your healthcare team about targeted therapy

- What is a driver mutation?
- What are the different types of driver mutations?
- Driver mutations seen in lung cancers
- What is targeted therapy?
- What are kinase inhibitors?
- Where do targeted therapies fit into a treatment plan?
- Which driver mutations identified in lung cancer are being studied?
- What are antibody–drug conjugates, and how do they work?

LUNgevity Foundation: Lung Cancer Resource Compendium

Survivorship and Support Services



LifeLine Support Partners



Support from a fellow survivor or caregiver

Clinical Trial Ambassador



Volunteers sharing their personal clinical trial experiences

Clinical Trial Finder



LUNGevity Foundation: Lung Cancer Resource Compendium

Patient Biomarker Testing Handouts



Questions to ask your doctor about biomarker testing for lung cancer



If you have lung cancer, talk with your doctor about biomarker testing. Biomarker testing helps your doctor decide if certain treatments are right for your treatment plan. Ideally, you should get the results of your biomarker testing before starting treatment.

These questions will help you talk with your doctor. Circle the questions you want to ask and write their answers on another piece of paper.

Questions about biomarker testing

- ☐ How is biomarker testing done?
- ☐ Will I need a tissue biopsy, a liquid (blood) biopsy, or both?
- ☐ If I get a tissue biopsy:
 - ☐ How will you do the biopsy?
 - ☐ How will you make sure to get enough tissue to do all of the necessary biomarker testing?
- ☐ Are there any problems that could happen from the biopsy?
- ☐ Will the lab test my sample for all known lung cancer biomarkers at the same time (called comprehensive biomarker testing)?

With the right information, you can be a more active participant in your healthcare decisions.



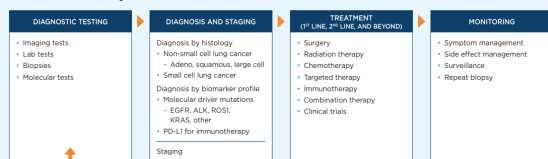
Review the chart below to better understand the lung cancer journey; use the information to improve and inform your conversations with your doctor.

DIAGNOSIS

STAGE

NOTES

The Patient Journey: Where Am I?



LUNG CANCER TREATMENTS



What you need to know about...

biomarker testing



Spanish and Health Literate
Materials Are Available

www.LUNGevity.org/booklets



Biomarker testing can help you get the best treatment for your specific lung cancer



What is a biomarker in lung cancer?

A **biomarker** is a substance that doctors can measure in your tissues, blood, or other body fluids, like fluid around your lungs. Biomarkers are errors or changes in a cell that cause cancer to grow.

There are 2 types of biomarkers that doctors measure most often in lung cancer:

- ☐ **Driver mutations**, which are errors or changes (mutations) in a cell's genes that cause (or "drive") the cancer to grow. A **gene** is the code within a cell that tells it how to grow.
- ☐ **PD-L1 protein levels**. PD-L1 is a type of protein that stands for "programmed death-ligand 1". The level of PD-L1 protein on lung cancer cells may let cancer cells hide from your immune system, which lets cancer cells grow.

Conceptos básicos del cáncer del pulmón: Folleto sobre la prueba de biomarcadores 1



Aprenda acerca de la prueba de biomarcadores y cómo pueden ayudarle a obtener el mejor tratamiento para su tipo específico de cáncer del pulmón

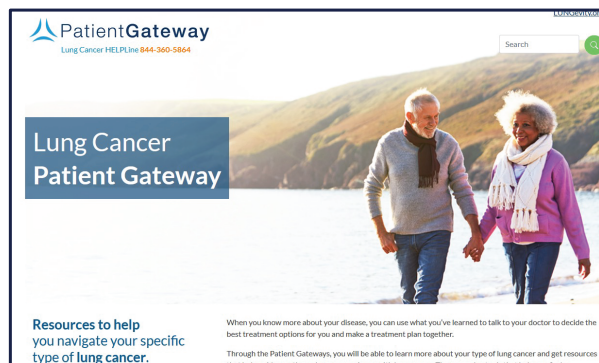
En este folleto, usted aprenderá:

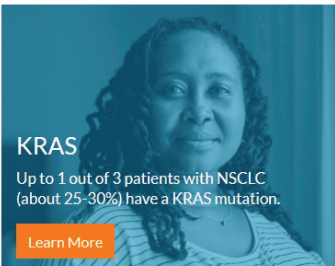
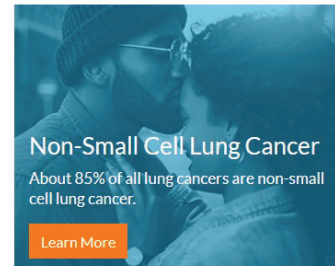
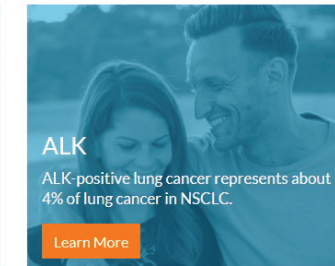
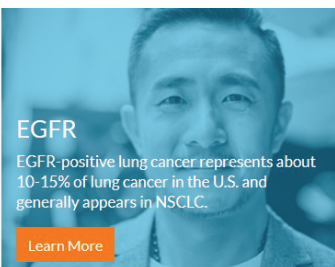
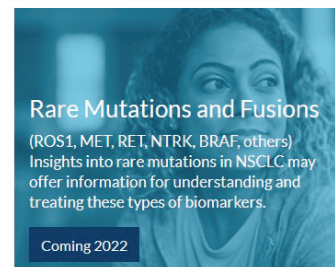
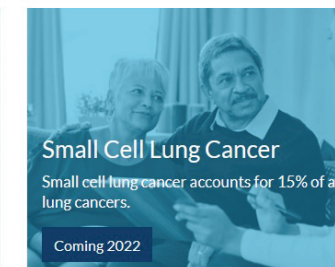


Qué es un biomarcador y qué es la prueba de biomarcadores

LUNGevity Foundation: Lung Cancer Resource Compendium

LUNGevity Lung Cancer Patient Gateways



 <p>KRAS</p> <p>Up to 1 out of 3 patients with NSCLC (about 25-30%) have a KRAS mutation.</p> <p>Learn More</p>	 <p>Non-Small Cell Lung Cancer</p> <p>About 85% of all lung cancers are non-small cell lung cancer.</p> <p>Learn More</p>	 <p>ALK</p> <p>ALK-positive lung cancer represents about 4% of lung cancer in NSCLC.</p> <p>Learn More</p>
 <p>EGFR</p> <p>EGFR-positive lung cancer represents about 10-15% of lung cancer in the U.S. and generally appears in NSCLC.</p> <p>Learn More</p>	 <p>Rare Mutations and Fusions (ROS1, MET, RET, NTRK, BRAF, others)</p> <p>Insights into rare mutations in NSCLC may offer information for understanding and treating these types of biomarkers.</p> <p>Coming 2022</p>	 <p>Small Cell Lung Cancer</p> <p>Small cell lung cancer accounts for 15% of all lung cancers.</p> <p>Coming 2022</p>

LUNGevity Lung Cancer Patient Gateways are **tailored portals** for people with lung cancer to learn more about their type of lung cancer, connect to experts and patient communities, and access educational resources

LUNgevity Foundation: Lung Cancer Resource Compendium

For more information about the support systems available to you in your lung cancer journey, visit the LUNgevity website:
<https://lungevity.org/for-patients-caregivers/support-services>

Lung Cancer Support Community



A dedicated social network for anyone touched by lung cancer

Lung Cancer HelpLINE



Call to talk with an oncology social worker

Peer-to-Peer Monitoring



Support from a fellow survivor or caregiver

Survivorship Programs



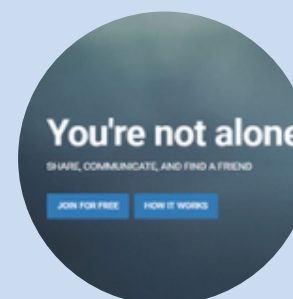
HOPE Summit conferences for lung cancer patients and caregivers

Online Communities



Resources to make you feel more connected

Patient TrueTalk



A unique patient-to-patient registry